

RE-MEMORI

Penumbra Theatre

Director Chris Berry

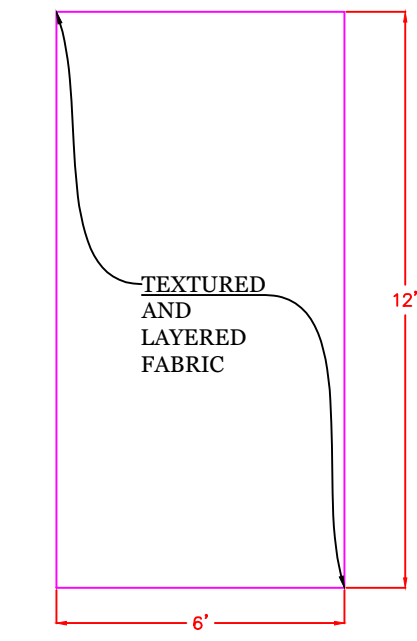
SECTION

Built by The University of Minnesota Scenic Shop

DRWN MK 1/4" = 1' -0" Date: 05.26.2023

REVISED:

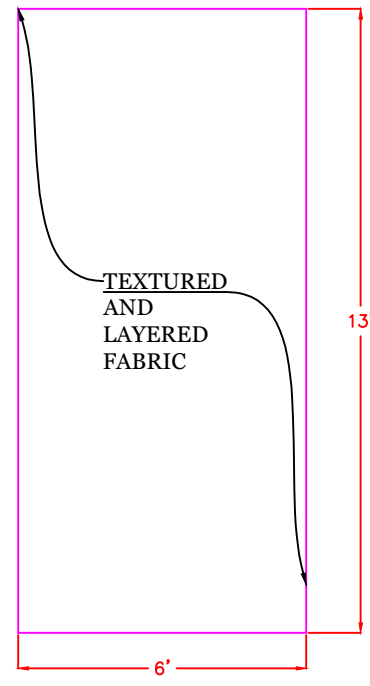
Designer Mina Kinukawa



**PANEL A
FRONT ELEVATION**



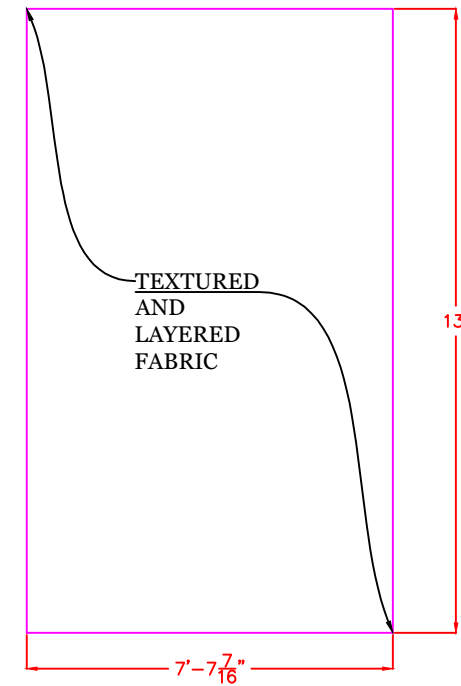
**PANEL A
SIDE VIEW**



**PANEL B
FRONT ELEVATION**



**PANEL B
SIDE VIEW**



**PANEL C
FRONT ELEVATION**



**PANEL C
SIDE VIEW**



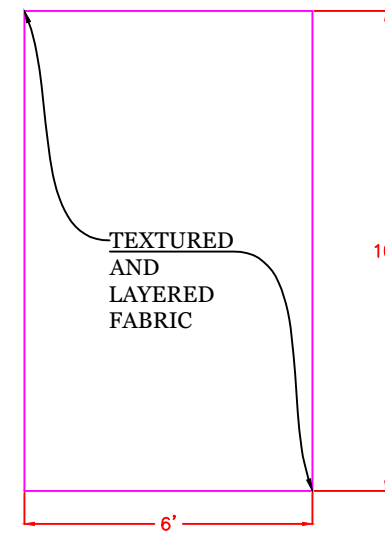
**PANEL A
PLAN**



**PANEL B
PLAN**



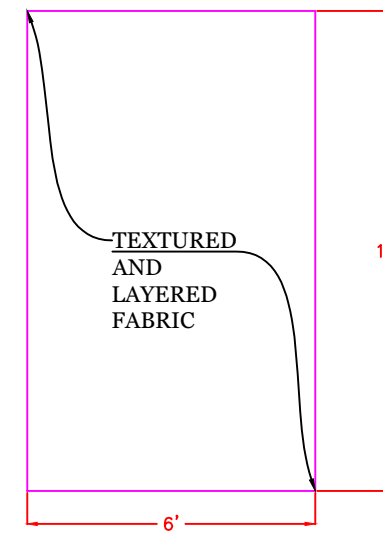
**PANEL C
PLAN**



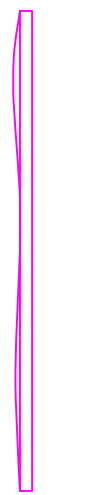
**PANEL E
FRONT ELEVATION**



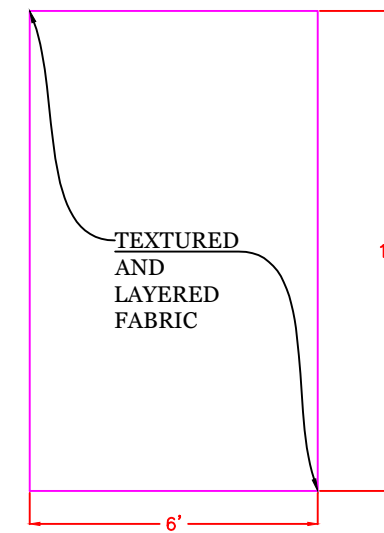
**PANEL E
SIDE VIEW**



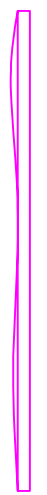
**PANEL F
FRONT ELEVATION**



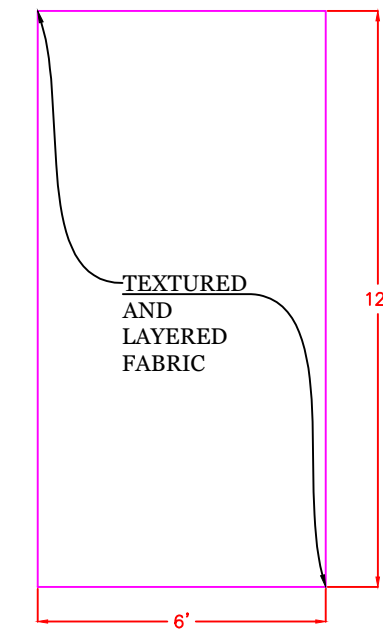
**PANEL F
SIDE VIEW**



**PANEL G
FRONT ELEVATION**



**PANEL G
SIDE VIEW**



**PANEL H
FRONT ELEVATION**



**PANEL H
SIDE VIEW**



**PANEL E
PLAN**



**PANEL F
PLAN**



**PANEL G
PLAN**



**PANEL H
PLAN**

- NOTES:**
- All PANELS are made with layered textured fabric (Silver Metallic Molding Cloth from Rose Brand) (see designer and reference)
 - All PANELS will be projection surfaces.
 - Some fabric on panels will be removed by the actor during the scene and placed on the stage floor.
 - TBD: speakers and lighting instruments possibly placed between the layers of fabric

PANELS

Built by The University of Minnesota Scenic Shop

DRWN MK

1/4" = 1'-0"

Date: 05.27.2023

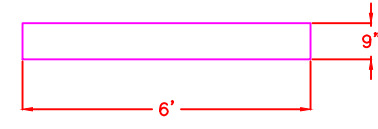
REVISED: 06.30.2023

RE-MEMORI

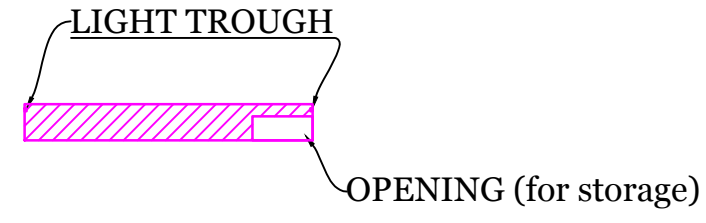
Penumbra Theatre

Director Chris Berry

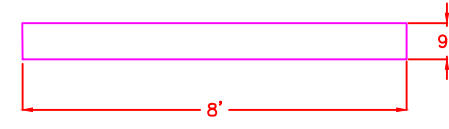
Designer Mina Kinukawa



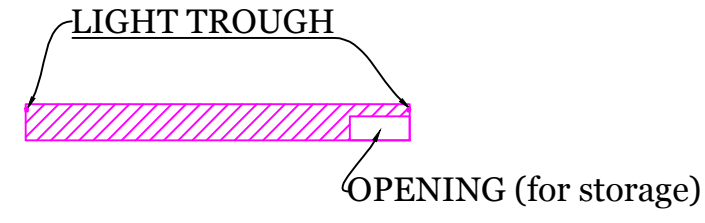
PLATFORM a
FRONT ELEVATION



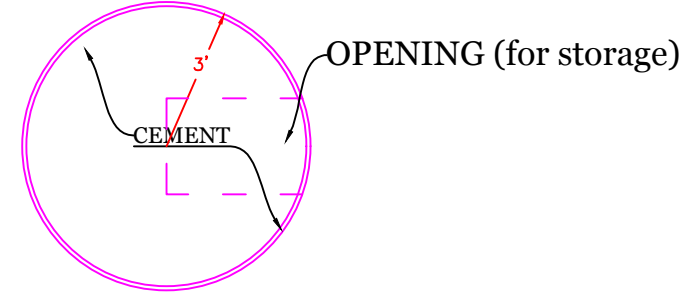
SECTION



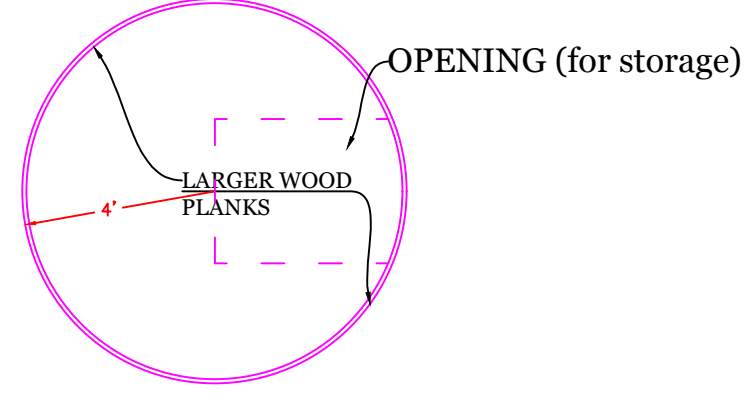
PLATFORM b
FRONT ELEVATION



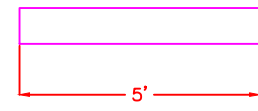
SECTION



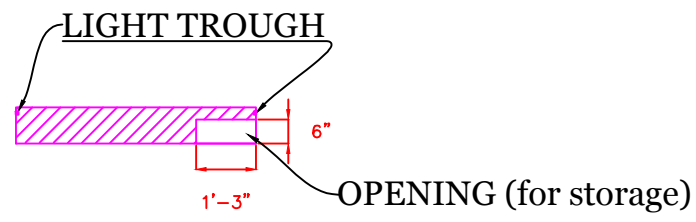
PLATFORM a
PLAN



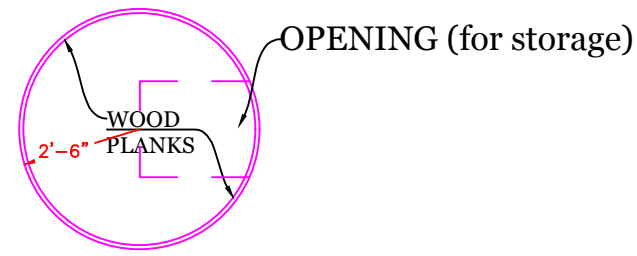
PLATFORM b
PLAN



PLATFORM c
FRONT ELEVATION



SECTION



PLATFORM c
PLAN